

SHARP®

POWERFUL PERFORMANCE, ENHANCED OPERABILITY, ENERGY EFFICIENCY



"Highly Recommended" Rating
MX-3140N & MX-3640N (2013)
MX-2640N (2014)



"Reliability Certified"
MX-3140N & MX-3640N (2013)
MX-2640N (2014)



MX-2640N
MX-3140N
MX-3640N

A vision at work—MX-2640N/3140N/3640N—provides your business with the tools you need to gain the competitive advantage.

FULL-COLOR LEDGER-SIZE WORKGROUP DOCUMENT SYSTEMS

Sharp's new MX-2640N/3140N/3640N color series document systems combine the simplicity of touch-screen menu navigation with robust multi-tasking workflow features that can help virtually any office accomplish more in less time. A large 10.1" (diagonally measured) high-resolution, tilting touch-screen display offers groundbreaking real-time image preview with intuitive flick-and-tap editing to help ensure your documents are produced accurately and without waste. This new series also offers many advanced features such as a fully customizable home screen, dynamic action menus that provide feature-specific guidance, and a full-size retractable keyboard for easy data entry. Plus, with Pantone® licensing, these models offer unprecedented levels of color fidelity – combined with true 1200 x 1200 dpi print resolution, they can help your business produce professional-looking color documents in-house with breathtaking image quality that is also economical. The new MX-2640N/3140N/3640N color series has been built on the latest Sharp OSA® development platform, making integration with network applications and cloud services easier than ever. And with Sharp's industry-leading security platform with standard 256-bit data encryption and overwrite protection, you can rest assured that your intellectual property is well protected.



innovation

VERSATILE

MULTI-FUNCTIONAL

POWERFUL

MULTI-TASKING

INTUITIVE

Advanced features plus multi-functional capability allow you to meet tomorrow's document needs today.

- Large 10.1" high resolution touch-screen display with tilt view
- Real-time image preview feature with flick, tap and slide navigation, and multi-touch pinch-and-zoom capability to shrink and enlarge images
- Fully customizable home screen feature enables users to add **custom** backgrounds and icons, change the display language and more

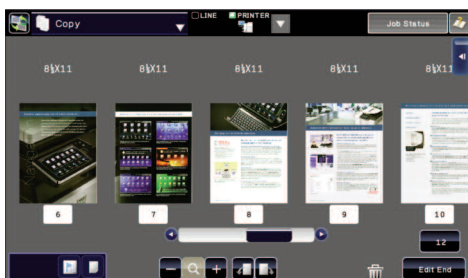


- New 500 + 2,000-sheet **tandem paper drawer option expands** maximum online paper capacity to **6,600 sheets**
- **Pantone Licensing** offers unprecedented levels of **color fidelity** to the **PANTONE MATCHING SYSTEM®**
- 1200 x 1200 dpi printing provides clear, crisp images even on jobs with fine detail
- Industry-leading ImageSEND™ function scans both black and white and color documents at up to 50 images per minute to USB devices, network folders, E-mail and more
- Network ready **PCL® 6** and true **Adobe® PostScript® 3™** printing systems with direct print function and available XPS option
- Easy-to-use Document Filing System with thumbnail view and image preview features for easy identification
- Supports the latest Sharp OSA development platform, enabling businesses to easily integrate with network applications and cloud services
- Flexible paper handling system feeds up to **80 lb cover** through the paper trays and up to 110 lb cover through the bypass tray
- Super G3 fax option with intelligent inbound routing to multiple destinations
- Supports Sharp's award-winning security platform with standard 256-bit data encryption and up to 7 times overwrite protection
- Energy efficient belt fusing system offers low power consumption, fast warm up and enhanced print quality

REVOLUTIONARY MFP FEATURES TO STREAMLINE YOUR WORKFLOW



Full-size retractable keyboard simplifies data entry.



Easily edit documents in scan preview mode.



Intuitive copy screen shows options on the left and menu guidance on the right.



Available paper capacity stores up to 6,600 sheets.

Flexible design to meet the needs of your environment.

A Smart Touch-Screen Helps You Get Your Work Done Fast

The new MX-2640N/3140N/3640N color workgroup document systems feature a 10.1" (diagonally measured) high-resolution LCD that goes beyond basic touch-screen menu navigation. With advanced features that include flick, tap, slide, pinch and zoom, you can quickly access the powerful functions of this new series. In addition, a tilting display panel provides enhanced accessibility. A standard built-in full-size retractable keyboard makes data entry quick and easy.

Easily Check and Edit Your Original Document

Save time and help reduce waste by correctly executing your copy or scan job the first time. With Sharp's real-time scan preview and edit functions, you can quickly rotate or delete pages, insert blank sheets, remove artifacts, change the color mode, even check the staple position before executing your job. Dynamic action menus provide feature-specific guidance, so it is easy to determine your choices for each operation. For comprehensive, step-by-step instructions on any operation, simply open the on-line user manual and navigate to the feature you need.

High Image Quality You Expect with the Performance You Need

The new MX-2640N/3140N/3640N color workgroup document systems utilize a powerful multi-tasking controller designed to quickly execute complex copy, print and scan jobs even in busy office environments. Plus, with print speeds of 26, 31, and 36 pages per minute, this new series can help elevate your office productivity to new heights. With 1200 x 1200 dpi print resolution and Pantone licensing your business can produce professional-looking color documents with breathtaking image quality.

Flexible Configurations for Today's Unique Office Environments

This new series offers a flexible paper handling system that includes an available 500 + 2,000-sheet tandem paper drawer. With rugged paper tray handles for easy access and available on-line paper capacity for up to 6,600 sheets, the machine is ready when you are. A standard 100-sheet reversing document feeder combined with automatic trayless duplexing, electronic sorting and integrated offset stacking, allow you to complete even large jobs in a snap.

Advanced Finishing Adds the Final Touch

This series offers a choice of two high-performance finishers that can give your documents a professional look and feel. Choose from a compact inner finisher or floor-standing saddle-stitch finisher. Both finishers offer three-position stapling and an available 3-hole punch.

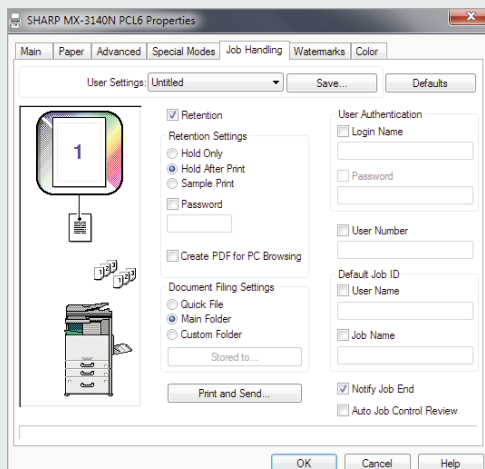


MX-3640N shown with saddle-stitch finisher and optional MX-LC11.



MX-3640N shown with compact inner finisher.

VERSATILE FUNCTIONALITY FOR OPTIMAL QUALITY AND RESULTS



With Sharp's advanced job handling, you can retain print jobs on the hard drive for reprinting at a later date.



Sharp's integrated network scanning offers one-touch document distribution to up to seven destinations.



Sharp's Document Filing System with thumbnail preview makes it easy to locate and retrieve stored jobs.



Work more efficiently and collaborate more easily with Cloud Portal Office.

Advanced technologies deliver outstanding output quality and flexible document distribution at your fingertips.

Exceptional Print Quality with Professional Output

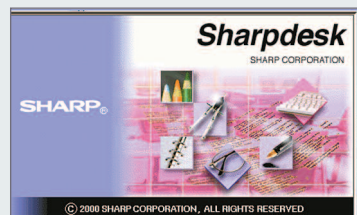
With the MX-2640N/3140N/3640N color series, your business can produce brilliant, high-color documents, as well as razor-sharp B&W documents. Plus, with 1200 x 1200 dpi resolution, even documents with fine detail will look great! Easy-to-use print drivers allow you to set up complex jobs with just a few mouse clicks. The PostScript driver delivers extensive color control options, so you can manage color consistency right from your desktop. For even more flexibility, add the optional XPS kit. With Sharp's advanced job retention features, jobs can be stored on the hard drive to be reprinted again and again by walk-up users or from the embedded web page.

Integrated Network Scanning

With Sharp's powerful ImageSEND technology, you get one-touch distribution features that help centralize document workflow, reduce mail costs and save time. With **multiple** destinations including E-mail, Desktop, FTP, Network Folders (SMB), Home Directory, USB, Fax and Internet Fax, getting your document where it needs to go is as easy as pushing a button. High-volume workgroups will appreciate the Send to Group mode that allows users to broadcast to a mixed group of E-mail, Fax, and Internet Fax destinations for increased efficiency.*

Convenient E-mail Distribution and Document Management

With Lightweight Directory Access Protocol (LDAP), there's no need to manually enter a recipient's complete E-mail address. Simply enter the first few characters and it automatically searches and displays a list of matching names. And with Sharpdesk® personal document management software and the available Sharp OSA Network Scanner Tool (NST), users can easily organize their scanned documents and integrate them into everyday workflow.



Sharpdesk personal document software

Innovative Document Filing System For Easy Access

Sharp's easy-to-use **Document Filing System** provides a hard disk drive to store frequently used files like forms, templates and reports. With thumbnail preview mode, stored jobs can be located and retrieved quickly. An advanced backup system and PIN-access security helps ensure your files are safe. For critical environments, an optional back-up hard disk drive is available.

Connect Your Workforce with Cloud Portal Office and Collaborate More Easily

Cloud Portal Office is a comprehensive document storage and sharing service that provides a convenient way to **seamlessly connect to your business content** and easily **share and collaborate** with team members. You can also capture, index and archive both paper and electronic documents in a single repository. Most importantly, IT administrators can **manage and control user access** in order to safeguard company data.



"Outstanding Achievement
In Innovation
Cloud Portal Office"

*Some features require optional equipment.

Streamline your document workflow and enhance your productivity with Sharp OSA technology.

Integrating With Network Applications and Cloud Services Has Never Been So Easy

The MX-2640N/3140N/3640N color series offers powerful document workflow capabilities to help businesses leverage their network infrastructure, cloud-enabled services and more!* While others are limited to a small circle of productivity, the Sharp OSA development platform allows businesses to leverage the power of their network applications, back-end systems, even cloud-enabled services, right from the touch-screen panel of this new series.

Save Time, Increase Efficiency

You'll save time and increase the efficiency of everyday tasks with Sharp OSA technology because it can be virtually seamless to the user. Any MX-2640N/3140N/3640N anywhere in the organization can display choices that were once only available on a desktop PC. With one-touch access to business applications via Sharp OSA integration, you can start and finish a document distribution task without worry.

**Some features require optional equipment.*

Customized Integration

Sharp OSA technology also provides powerful customization. With the ability to personalize applications and processes specific to your business, Sharp OSA technology can help eliminate redundancy and streamline workflow, helping to save time and optimize productivity. The latest version of Sharp OSA technology can reach beyond the firewall, enabling cloud-based applications over the Internet. And since Sharp OSA technology utilizes industry-standard network protocols such as SOAP and XHTML, third party software developers can deliver customized solutions to your business faster than ever.

The Convenience You Want With the Security You Need

The MX-2640N/3140N/3640N color series with the Sharp OSA development platform is the logical choice for providing fast, flexible access to documents and applications...no matter where you are in the office. You also get the controlled access and tracking ability you require with tighter integration capabilities for network security and accounting applications.



ADVANCED DEVICE MANAGEMENT TOOLS MAXIMIZE EFFICIENCY

The MX-2640N/3140N/3640N color series document systems enhance operational efficiency through versatile device management capabilities.

Sharp Remote Device Manager (SRDM)

Make management of your MX-2640N/3140N/3640N simple and straight forward with Sharp Remote Device Manager (SRDM). This easy-to-use software allows you to take control of the versatile system features and simplifies installation and management.

- With Printer Status Monitor, network users can view printer conditions, check paper levels, toner, and more, all through an easy-to-use interface.
- With Sharp Remote Device Manager, administrators can easily manage the setup, configuration, device settings, cloning and more! Advanced features such as Remote Front Panel allow administrators and support personnel to view and control the LCD panel of the machine remotely from virtually any PC on the network. Plus, with event-driven, real-time service alerts, administrators and supervisors can achieve higher productivity. Now it is easier than ever to view service logs, click counts, history reports and more.
- Experience the convenience of an Embedded Web Page right from your desktop! This advanced web-based management tool allows users to create and manage their own network scanning destinations, profiles and web-links. Administrators can access device settings, color control, account information and security settings.

Take Charge of Color Usage and Costs

With Sharp's device management system, administrators and supervisors can define user groups on the MX-2640N/3140N/3640N to manage and restrict features, such as color copying, scanning or printing. Easily set up a custom user group to manage page counts (copy, print, scan or fax operations) for both color and B&W. This helps to simplify cost management of color imaging. The MX-2640N/3140N/3640N can store profiles for up to 1,000 users.

24/7 Training with My Sharp™

Managing all of the advanced features of your Sharp product is simple and easy. Ask your Authorized Sharp Dealer about the My Sharp website. This dedicated customer training website is customized to your MX-2640N/3140N/3640N and allows you to locate resources and find information specific to your configuration, truly helping you maximize your investment.



Remote Front Panel

Embedded Web Page

HEIGHTENED SECURITY HELPS PROTECT YOUR BUSINESS

To help protect your data, the MX-2640N/3140N/3640N offers several layers of security, making Sharp the optimum choice to help protect employees privacy and intellectual property.* As a leader in office equipment security, Sharp makes it easy for virtually any business or government entity to safely deploy digital copying, printing, scanning and faxing.

Authority Groups

Advanced account management enables administrators to set authority groups for access to features of the MX-2640N/3140N/3640N. Administrators can control which department, for instance, has full access to copying, printing, scanning and/or fax. Walk-up users enter a Code, Local Name and Password, or LDAP User Authentication to access the features assigned to their group.

Data Overwrite and Encryption

To help protect your data, the MX-2640N/3140N/3640N can encrypt document data using **AES (Advanced Encryption Standard) 256-bit encryption**. The MX-2640N/3140N/3640N can also erase the temporary memory on the hard drive by overwriting the encrypted data up to seven times, offering an unprecedented level of assurance. A convenient **End-of-Lease feature** overwrites all data, including document filing, user data, job status, date and address book.

Network Scanning Access Control

To help protect your network from unauthorized E-mail communications, the MX-2640N/3140N/3640N supports **User Authentication**, requiring users to login before performing any network scanning operations.

Control Device Access Over the Network

To help restrict access to the device over the network, the MX-2640N/3140N/3640N offers IPsec, SMB and extended support for **SSL Encryption** (Secure Sockets Layer), **IP/MAC address** filtering, IEEE 802.1x authentication, protocol enable/disable and port management for maximum security.

**Some features require optional equipment and/or software.*

Documents Remain Confidential

The MX-2640N/3140N/3640N offers Confidential Printing, which when used, requires users to enter a PIN code in order to print a queued document. To help protect your direct-print documents from unauthorized viewing, the MX-2640N/3140N/3640N offers encrypted PDF printing and scanning. Additionally, Secure Fax Release ensures received fax documents are held in memory until an authorized user enters a PIN code, so that compliance with healthcare regulations such as HIPAA is easier.

Tracking and Auditing Information

Legislation and industry policies require companies to be more aware of information flow from their offices. Sharp offers both built-in and additional hardware/software which allows users to control, access and track usage of each device on the network.

Data Security Kit (Optional)

For maximum protection, the optional data security kit offers additional features, such as Data Overwrite at Power Up, Document Filing access control and Restricted Status Display.

These scalable security offerings aim to protect your intellectual property, preserve confidential information and help your business to meet regulatory requirements, such as the Health Insurance Portability and Accountability Act (HIPAA), and the Gramm-Leach-Bliley Act (GLB). For additional information visit: www.sharppusa.com/security.

ENVIRONMENTAL COMMITMENT



An Environmentally Responsible Approach to Product Design

The MX-2640N/3140N/3640N utilizes Sharp's advanced micro-fine toner technology, which offers a lower consumption rate and produces less waste than conventional toners, resulting in longer replacement intervals. Sharp supplies are packaged using fully recyclable materials. Long-life consumable parts help minimize service intervals and down time, resulting in lower operating costs. With two different energy saving modes, power can be reduced or shut off at set intervals. The MX-2640N/3140N/3640N document systems are ENERGY STAR® certified and RoHS compliant to restrict the use of hazardous substances.



Toner Recycling Program

As part of our commitment to helping preserve the environment, Sharp offers our customers zero waste land fill recycling for all Sharp consumables, including cartridges, bottles, toner collection containers and drum units. Sharp encourages customers to recycle their used Sharp toner cartridges in bulk by providing a pre-paid Recycling Kit for their return to our facility.

Environmental Leadership

As a testament to our commitment to the environment, Sharp is a three-time winner of the ENERGY STAR annual Excellence in Energy Proficiency Product Design. Sharp is also a four-time winner of the SmartWay® Excellence Award, which recognizes companies for conserving energy and lowering greenhouse gas emissions in logistics and transportation. Sharp was also a previous recipient of the Excellence in Partnership Green Contractor Award and the Evergreen Award from the General Services Administration (GSA) and the Coalition for Government Procurement. These awards recognize environmentally responsible businesses and their efforts on recycling, waste reduction and affirmative procurement practices.

Global Initiatives

Sharp is committed to environmental sustainability and corporate responsibility including planning, design, manufacturing, distribution and product end-of-life management. For more information about Sharp's environmental leadership including information about energy efficient products, electronics or toner cartridge recycling, please visit www.sharppusa.com/environment.

MX-2640N/MX-3140N/MX-3640N SPECIFICATIONS

Main Specifications	
MX-2640N/ 3140N/3640N	Base models include multi-tasking controller, high-resolution touch-screen display, 100-sheet RSFP, 320 GB hard disk drive with document filing, PCL®6 and Adobe® PostScript® 3™ printing systems, network printing, network scanning, duplexing, 500-sheet paper drawer, 100-sheet bypass tray. Developer is included.
Type	Console, color multi-function digital document system
Display	10.1" (diagonally measured) color dot matrix touch panel tilting display. 1024 x 600 dots (W-SVGA)
Functions	Copy, print, network print, network scan, document filing and fax¹
Copy System	Dry electrostatic transfer/Dual component developer/Magnetic brush development/OPC drums/Belt type fusing/white LED exposure
Originals	Sheets and bound documents
Max. Original Size	11" x 17"
Copy Size	Min. 5½" x 8½", Max. 11" x 17" + 12" x 18"
Copy Speed	26/31/36 ppm B&W/color (8½" x 11")
Multiple Copy	Max. 999 copies
First Copy Time (Seconds)²	MX-2640N Black Color Platen Glass 5.9 8.1 Doc. Feeder 9.1 11.6 MX-3140N Black Color 5.8 7.9 9.1 11.6 MX-3640N Black Color 5.2 6.8 8.1 10.6
Warm Up Time	18 seconds or less²
Magnification	25% to 400% in 1% increments (with document feeder 25%-200%)
Original Feed	100-sheet RSFP with original size detection
Scan Speed	Copy mode: up to 50 OPM (B&W) @ 600 x 400 dpi; up to 36 OPM (Color) @ 600 x 600 dpi.² Network scan: up to 50 OPM (B&W or Color) 200 x 200 dpi.²
Original Sizes	5½" x 8½", 8½" x 11", 8½" x 11" R, 8½" x 14", 11" x 17"
Paper Feed System	Standard: (1) 500-sheet paper drawer (letter/legal/ledger/statement) and 100-sheet bypass tray (letter/legal/ledger/statement/envelope). Optional: single, double or triple drawer paper deck (500 sheets each drawer), tandem paper deck (2,500 sheets) letter/legal/ledger/statement.
Paper Types	Paper drawers: 16 lb. bond to 80 lb. cover. Other paper types include plain, pre-printed, recycled, pre-punched, letterhead and color paper. Bypass tray: 16-28 lb. bond (plain paper), 13-16 lb. bond (thin paper), 80-110 lb. cover (heavy paper), 20-24 lb. bond (Monarch/Com-10 envelope), tab paper (letter). Also label paper, gloss paper, pre-printed, recycled, pre-punched, letterhead, color paper and OHP film.
Duplexing	Standard automatic duplex copying and printing
CPU	Up to 1.8 GHz multi-processor design
Interface	RJ-45 Ethernet (10/100/1000Base-T), USB 2.0 (2 host ports, front and rear), USB 2.0 (1 device port, rear)
Memory	Standard 4 GB copy/print (shared)
Hard Disk Drive	320 GB; 105 GB for document filing
Copy Resolution	Scan: B&W/color: 600 x 600 dpi; Copy output: B&W/color: 600 x 600 dpi
Color Modes	Auto Color Control (ACC), Full Color Mode, Monochrome (B/W)
Exposure	Modes: Automatic Text, Text/Photo, Text/Printed-Photo, Printed-Photo, Photo, Map, Pale-Color Document. Settings: Auto or 9 step manual
Control	256 gradations/2 levels (monochrome)
HalfTone	
Copy Features	Scan-Once Print-Many, electronic sorting, offset-stacking, Auto Color Sensing (ACS), Auto Paper Sensing (APS), Auto Magnification Sensing (AMS), image preview, image edit, auto tray switching, rotation copy, reserve copy, tandem copy, book copy, margin shift, tab-paper insertion, edge erase, center erase, book divide, dual page copy, cover pages, insert pages, OHP insertion, job build, card shot, blank page skip, mirror image, black-white reversal, centering, proof copy, 2-in-1/4-in-1/8-in-1, pamphlet, watermark custom image, job programs, date/character/page stamp.
Account Control	Up to 1000 users. Supports user-number authentication (on device), login name/password (on device) or login name/password (on device via LDAP server) for copy, print, scan, fax and document management.
Output Tray Capacity	Main output tray (top) 400 sheets (face down); optional eject tray (right 1 side) 100 sheets (face down)
Firmware	Flash ROM with local (USB), network update capability and firmware
Management	update 1 to N with SRDM (Sharp Remote Device Manager)
Configuration	Web-based management with user/administrator level login, cloning
Method	(1 to N) with SRDM and remote front panel access
Service/Functions	Remote front panel, remote access to service logs and click counts
Accessibility	Tilt front panel, adjustment of key touch sound and speed, document
Features	feeder free stop, job programs, remote front panel, universal grip for paper trays, and disable screen timeout
Environmental Standards	International Energy Star Program Ver. 1.2
Power	AC 100-127 VAC, 60 HZ, 12 Amps
Power Consumption	Maximum: 1440 W or less
Weight	167.5 lbs.
Approx. Dimensions	24" (w) x 27" (d) x 33" (h)

Network Printing System	
PDL	Standard PCL6 compatible, PostScript 3, optional XPS
Resolution	1200 x 1200 dpi
Print Speed	26/31/36 pages per minute (8½" x 11")
Print Drivers	Windows XP, Windows XP x64, Windows Server® 2003-2008, Windows Server 2003-2008 x64, Windows Vista®, Windows Vista x64, Windows 7, Windows 7 x64, Windows 8, Windows 8 x64, Windows Server 2012 x64, Windows PPD, MAC OSX® (including 10.4, 10.5, 10.6, 10.7, 10.8), all MAC PPD
Features	Auto configuration, continuous printing, electronic sorting, offset stacking, N-up printing, duplex printing, transparency inserts, margin shift, image rotation, different cover page, poster print, job bypass print, job retention, confidential print, proof print, user authentication, image stamp and watermarks. Additional features: Multiple pamphlet, network tandem print, carbon copy print mode, different cover page/last page/other page, form overlay, tab paper settings, tab printing, chapter inserts, page Interleave and bar code font printing¹
Direct Printing	File Types: TIFF, JPEG, PCL, PRN, TXT, PDF, Encrypted PDF, PostScript and XPS¹; Methods: FTP, SMB, Web page, E-mail and USB memory
Resident Fonts	80 outline fonts (PCL), 139 fonts (PS)
Interface	RJ-45 Ethernet 10/100/1000 Base-T, USB 2.0
Operating Systems	Windows Server 2003-2008, Windows XP, Windows Vista, Windows 7, Windows 8, Mac OS X 10.4, X10.5, X10.6, X10.7, X10.8, Novell® NetWare®, UNIX®, Linux® and Citrix® (XenApp 5.0, 6.0, 6.5) and Windows Terminal Services, SAP device types¹
Network Protocols	TCP/IP (IPv4, IPv6, IPSEC) SSL (HTTP, IPP, FTP), SNMPv3, SMTP, POP3, LDAP, 802.1x for Windows and Unix. LPD and LPR for Unix. IPX/SPX® for Novell environments. EtherTalk®, AppleTalk® for Macintosh® environments.¹
Printing Protocols	LPR, IPP, IPPS, PAP, Raw TCP (port 9100), FTP, POP3, HTTP, and Novell Pserver/Rprinter
Network Security	IP/MAC address filtering, protocol filtering, port management, user authentication and document administration.¹
Security Standards	IEEE-2600TM-2008, DoD (NSTISSI) #11, CAC/PIV access control¹
Network Scanning System	
Scan Modes	Standard: Color, monochrome, grayscale
Max. Original Size	11" x 17"
Optical Resolution	600 dpi
Output Modes	600 dpi, 400 dpi, 300 dpi, 200 dpi, 150 dpi, 100 dpi
Image Formats	Monochrome: TIFF, PDF, PDF/A, Encrypted PDF, XPS Color: Grayscale, Color TIFF, JPEG, PDF, Encrypted PDF, XPS Internet Fax: TIFF-FX, TIFF-F, TIFF-S, PDF/A, Compact PDF¹
Image Compression	Monochrome scanning: G3 (MH), G4 (MR/MMR) Color/grayscale: JPEG (high, middle, low) Internet fax mode: MH/MMR (option)
Scan Destinations	E-mail, Desktop, FTP, Network Folder (SMB), Home Directory, USB, Internet fax (option), Super G3 fax (option)
One-touch Destinations	Up to 2000 (combined scan destinations)
Group Destinations	Up to 500
Programs	48 (combined)
Max. Jobs	Up to 100
Network Protocols	TCP/IP and SSL (includes HTTP, SMTP, LDAP, FTP, POP3), SMB, ESMTTP and 802.1x
Network Security	E-mail server user authentication for LDAP and Active Directory
Software	Sharpdesk® desktop document management software (1 user license), Sharpdesk Mobile
B&W Super G3 Fax Kit (option)	
Transmission	Super G3, G3
Mode	
Modem Speed	33.6 KBPS³
Compression	JBIG, MMR, MR, MH
Methods	
Scanning Method	Sheet fed simplex or duplex or book
Max. Resolution	400 dpi
Transmit Speed	Approx. 2 seconds with Super G3/JBIG⁴
Auto Dialing	Up to 2,000 (combined scan destinations)
Group Dial	Up to 500 destinations
Inbound Fax	Forwards received fax data to E-mail, FTP, SMB, Desktop, Fax, I-Fax⁵
Routing	
Long Length	Up to 33 ¼" (for transmission)
Originals	
Programs	48 (combined)
Memory	Shared
HalfTone	256 levels

Saddle Stitch Finisher (option)	
Type	Console finisher with dual exit trays (mounts on left side of host machine)
Output Trays	Upper tray: Offset stack tray Lower tray: Book tray for saddle stitch
Output Capacity	1000 sheets (letter/statement size) or 500 sheets (legal, ledger or letter-R size)
Stapling	Up to 50 sheets (letter/statement) or 25 sheets (legal, ledger or mixed)
Output Delivery	Face down
Stapling Media	Plain paper, letter/legal/ledger size or mixed
Stapling Positions	1 front, 1 rear, or both
Saddle Stitch Function	Center stitch/center folding (2 staples) letter/legal/ledger paper sizes
Saddle Stitch Max. Sets	Up to 10 sets (11-15 sheets per set)/15 sets (6-10 sheets per set)/20 sets (1-5 sheets per set)
Power	70 W or less (supplied from main unit)
Consumption	
Hole Punching	Optional hole punch unit MX-PNX5B (2 holes/3 holes)
Weight	Approx. 88 lbs.
Dimensions	26" (w) x 25" (d) x 39" (h) (with tray extended)
Inner Finisher (option)	
Type	Built-in finisher (hole punch unit option)
Output Capacity	500 sheets (letter/statement) or 250 sheets (ledger/legal size)
Output Delivery	Face down
Stapling Media	Plain paper (letter, legal, or ledger size)
Stapling Positions	1 front, 1 rear, or both
Power	50 W or less (supplied from main unit)
Consumption	
Stapling	Up to 50 sheets (letter size) or 30 sheets (legal, ledger or mixed)
Stapled Sets	30 bundles or 500 sheets (letter or statement size) or 30 bundles or 250 sheets (legal or ledger size)
Hole Punching	Optional hole punch unit MX-PN11B (2 holes/3 holes)
Weight	Approx. 26.5 lbs.
Dimensions	24¾" (w) x 23½" (d) x 8" (h) (includes extended tray)
Optional Equipment	
MX-DE12	Stand/1 x 500-sheet Paper Drawer
MX-DE13	Stand/2 x 500-sheet Paper Drawer
MX-DE14	Stand/3 x 500-sheet Paper Drawer
MX-DE20	Stand/500 + 2,000-sheet Tandem Paper Drawer
MX-LT10	Long Paper Feeding Tray
MX-36ABD	Rolling Cabinet Base
MX-LC11	Large Capacity Tray
MX-FN17	Inner Finisher
MX-PN11B	3 Hole Punch Unit (Requires MX-FN17)
MX-SCX1	Staple Cartridge (MX-FN17)
MX-FN10	Saddle Stitch Finisher
MX-RB10N	Paper Pass Unit (Required for MX-FN10)
MX-PNX5B	3 Hole Punch Unit (MX-FN10)
AR-SC3	Staple Cartridge (MX-FN10)
MX-TR13N	Right-side Exit Tray Unit
MX-TU12	Center Exit Tray Unit
MX-PUX1	XPS Expansion Kit
MX-FX11	Fax Expansion Kit
MX-FWX1	Internet Fax Kit
MX-PF10	Bar Code Font Kit
AR-SU1	Stamp Unit (Requires AR-SV1 Stamp Cartridge)
AR-SV1	Stamp Cartridge
MX-EB11	Enhanced Compression Kit
MX-EB12N	Mirror Expansion Kit
MX-AM10	Web Browsing Expansion Kit (Standard on the MX-3640N)
MX-AMX1	Application Integration Module
MX-FR41U	Commercial Data Security Kit
MX-EC50	CAC Reader (Requires Data Security Kit)
DVENDFS	Generic Vendor Interface Kit
Supplies	
MX-36NTBA	Black Toner Cartridge
MX-36NTCA	Cyan Toner Cartridge
MX-36NTMA	Magenta Toner Cartridge
MX-36NTYA	Yellow Toner Cartridge
MX-36NVBA	Black Developer
MX-36NVSA	Cyan/Magenta/Yellow Developer
MX-36NRSA	Drum
MX-230HB	Toner Collection Container

¹ Some features require optional equipment. See your local dealer.
² May vary depending on product configuration, machine settings and operating and/or environmental conditions.
³ Actual transmission time will vary based on line conditions.
⁴ Based on Sharp Standard Test Chart with approximately 700 characters, letter size in standard resolution.



SHARP ELECTRONICS CORPORATION
1 Sharp Plaza, Suite 1
Mahwah, NJ 07495-1123
1-800-BE-SHARP • www.sharpsusa.com

Design and specifications subject to change without notice. Sharp, Sharp OSA, Sharpdesk, My Sharp, and all related trademarks are trademarks or registered trademarks of Sharp Corporation and/or its affiliated companies. Windows, Windows Server and Windows Vista are trademarks or registered trademarks of Microsoft Corporation. All other trademarks are the property of their respective owners.

