

SHARP®

WORKGROUP COLOR DOCUMENT SYSTEMS



"Highly Recommended"
Award



"Reliability Certified"
Award



MX-2615N
MX-3115N

A full color ledger-size document system that will meet virtually all of your business needs.

MX-2615N & MX-3115N: FEATURE-RICH AND A STRONG VALUE

Boost workgroup efficiency and productivity with Sharp's new MX-2615N/3115N full color MULTI-FUNCTION DOCUMENT SYSTEMS, designed to deliver amazing image quality and consistent day-to-day performance while also being easy to afford. Features include STANDARD PCL®6 compatible printing language, a HIGH RESOLUTION TOUCH-SCREEN color display with graphical user navigation for easy operation, and a TOTAL PAPER CAPACITY UP TO 3,100 SHEETS. Equipped with a powerful TRUE MULTI-TASKING controller that allows quick processing of even complex print jobs, the MX-2615N/3115N produces HIGH-QUALITY, vibrant color documents in-house, helping you save time and money. Sharp's advanced device management tools make it simple for businesses to control system access, color usage and costs. To make integration with network applications easier than ever, the MX-2615N/3115N supports the SHARP OSA® DEVELOPMENT PLATFORM. Sharp's industry-leading security helps assure the confidentiality of your intellectual property. That's the SHARP DIFFERENCE.



VERSATILE

MULTI-FUNCTION

POWERFUL

MULTI-TASKING

INTUITIVE

Advanced features plus multi-function capabilities allow you to meet tomorrow's document needs today.

- Powerful **true, 600 MHz multi-tasking** full color document system
- **High-resolution 7" (diagonal) touch-screen** color display with graphical navigation
- Standard **PCL®6 compatible printing system** with available **PostScript®3 compatible and XPS options***
- **600 x 600 dpi** printing provides clear, crisp image output
- Advanced **ImageSEND™** function scans documents at up to **50 images per minute** in both black and color to USB devices, network folders, E-mail and more
- Convenient **Document Filing System** with **thumbnail view** and **image preview** features
- Available **500 + 2,000 sheet tandem paper drawer**, for an online **capacity of 3,100 sheets**



- Supports the Sharp OSA development platform, enabling businesses to streamline document workflow and help **enhance productivity with speed and efficiency***
- **Flexible paper handling** system feeds up to 110 lb. index through paper trays and up to 140 lb. index through the bypass tray
- Optional pull-out **QWERTY keyboard** for enhanced ease-of-use
- Supports Sharp's **award-winning** security platform with **standard 256-bit data encryption** and up to **7 times data overwrite protection**
- Convenient **End-of-Lease feature** overwrites all job data, user data and network information at trade-in time
- **Remote Front Panel feature** allows users and administrators to view and control machine operations from a PC workstation
- **Environmentally-friendly design** offers low power consumption, fast warm up, compact design and long-life parts and supplies

INTUITIVE FEATURES HELP BUSINESSES SOAR TO NEW HEIGHTS



High-resolution touch screen with Stylus pen for easy point-and-touch operation



Available paper capacity stores up to a maximum of 3,100 sheets with options



Sharp's easy-to-use Document Filing System with thumbnail preview

Sharp's MX-2615N/3115N will help elevate workgroup performance and meet on-the-go business demands.

The Flexibility and Performance You Need

With a **high-resolution touch screen color display** and a powerful **600 MHz multi-tasking controller**, the MX-2615N/3115N color workgroup document system can help elevate your office productivity to the next level. The intuitive menu navigation system with razor sharp graphics makes operating the MX-2615N/3115N simple and easy. With Sharp's true multi-tasking controller, complex color print jobs can be processed quickly, even while documents are being scanned. But that's just the beginning – with a standard **100-sheet reversing document feeder**, automatic duplexing, electronic sorting and integrated offset stacking, you'll complete even large jobs in a snap.

Professional Performance Your Business Can Depend On

Sharp's MX-2615N/3115N color workgroup document system delivers professional performance and optimal productivity to satisfy your daily production needs. Copy/print **speeds up to 31 ppm** (in both color or B&W) help you to meet project deadlines with time to spare. The flexible paper handling system can feed up to 110 lb. index stock through the paper trays and up to 140 lb. index through the bypass tray. With available on-line paper capacity of up to 3,100 sheets, the MX-2615N/3115N is ready when you are.

Innovative Document Filing For Easy Access

Sharp's easy-to-use **Document Filing System** can store frequently used files like forms and templates. Plus, with Sharp's **thumbnail preview** mode, stored jobs can be located and retrieved quickly. An advanced backup system and PIN-access security helps ensure that your files are safe.

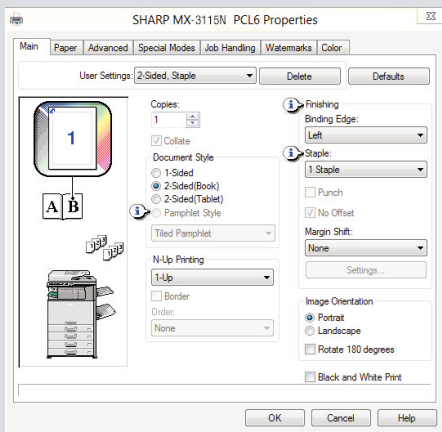
Advanced Finishing Adds The Final Touch

The MX-2615N/3115N also offers a compact, high-performance finisher with 3-position stapling and an available 3-hole punch that can give your documents a professional look and feel. In addition, an optional long paper feeding tray adds the availability of banner printing within the compact footprint of the MX-2615N/3115N.



The MX-3115N shown with compact inner finisher.

ENHANCED WORKFLOW FEATURES INCREASE PRODUCTIVITY



Sharp's easy-to-use print drivers make accessing all of the MX-2615N/3115N color features simple and easy.



USB 2.0 port is located on the front panel for easy access*

Impressive workflow efficiency with leading edge features that help deliver optimum results.

Exceptional Print Quality with Professional Finishing

With the MX-2615N/3115N, your business can produce brilliant, high-quality color documents, as well as crisp B&W documents. With standard PCL6 compatible printing language, available PostScript 3 compatible and XPS options, documents are printed with superb performance and efficiency. Plus, with **600 x 600 dpi** resolution, all of your documents will look great! **Powerful finishing features** include 3-position stapling for up to 50 sheets and 3-hole punching.*

A True Multi-Tasking Document System

The MX-2615N/3115N features a **high-performance**, multi-tasking controller that delivers copy, scan, fax and print jobs continuously for optimum efficiency. Some controllers only perform one operation at a time, but the MX-2615N/3115N continually processes incoming jobs even while existing jobs are output. The result? A workflow that virtually never slows down – even at crunch time.

Direct USB Printing Adds Convenience and Portability

With Direct USB printing, users can print color or B&W image files in a variety of popular formats directly from USB memory devices such as a ThumbDrive™ or ClipDrive™.* Need to print PDF brochures in a hurry for a big meeting? It's easy with the MX-2615N/3115N. Just plug in your portable USB memory device, select the file, and your job prints immediately.

FLEXIBLE DOCUMENT DISTRIBUTION



Integrated Network Scanning

With Sharp's powerful **ImageSEND™** technology, you get one-touch distribution features that centralize document workflow, help reduce mail costs and save time. With up to **seven destinations** – E-mail, Desktop, FTP, Network Folders (SMB), USB, Fax and Internet Fax – getting your document where it needs to go is as easy as pushing a button.* With **Sharpdesk®** personal document management software, users can organize scanned documents and integrate them into everyday workflow.

Integrated Super G3 Fax and Internet Fax

Add powerful facsimile capability with the optional Super G3 fax module, which features automatic stapled/copied receptions, and Inbound Fax Routing to E-mail. Sharp's innovative PC fax driver enables users to send fax documents right from their desktop. For Internet fax operation, add the optional B&W Internet Fax expansion kit.

Versatile Application Integration

To help streamline document workflow and **enhance productivity**, the MX-2615N/3115N supports **Sharp OSA Technology**, enabling users to easily interact with network applications and cloud services right from the touch-screen panel of the machine.* Sharp OSA Technology uses industry standard network protocols, allowing the MX-2615N/3115N to communicate with many different applications. For even more productivity, connect your workforce with **Cloud Portal Office** and collaborate more easily. Cloud Portal Office is a comprehensive document storage and sharing service that provides a convenient way to seamlessly connect to your business content and easily share and collaborate with team members.*



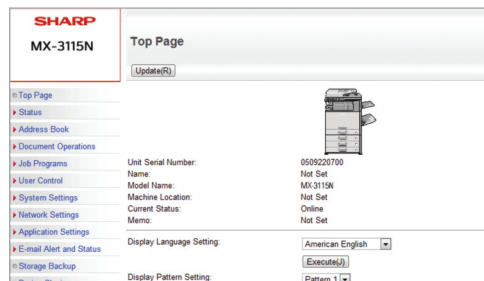
*Requires optional equipment and/or software services.



ADVANCED DEVICE MANAGEMENT MAXIMIZES PRODUCTIVITY



Separate print buttons for B&W and Color allow users to selectively manage use of color



Embedded web page



Sharp Remote Device Management

The MX-2615N/3115N implements versatile device management capabilities through user-friendly software to achieve ultimate efficiency.

Sharp Remote Device Management (SRDM)

Make management of your MX-2615N/3115N simple and straight forward with Sharp Remote Device Management (SRDM). This easy-to-use software allows you to take control of the versatile system features and simplifies installation and management.

- With **Printer Status Monitor**, network users can view printer conditions, check paper levels, toner, and more, all through an easy-to-use interface.
- With advanced **Sharp Remote Device Manager***, administrators can easily manage the setup, configuration, device settings, cloning and more! Advanced features such as **Remote Front Panel** allow administrators and support personnel to view and control the LCD panel of the machine remotely from virtually any PC on the network! Plus, with event-driven, real-time service alerts, administrators and supervisors can achieve higher productivity. Now, it is easier than ever to view service logs, click counts, history reports and more.
- Experience the convenience of an **Embedded Web Page** right from your desktop! This advanced web-based management tool allows users to create and manage their own network scanning destinations, profiles and web-links. Administrators can access device settings, color control, account information and security settings.

Take Charge of Color Usage and Costs

With Sharp's **device management system**, administrators and supervisors can define user groups on the MX-2615N/3115N to manage and restrict features, such as color copying, scanning or printing. Easily set up a custom user group to manage page counts (copy, print, scan or fax operations) for both color and B&W. This helps to simplify cost management of color imaging. The MX-2615N/3115N can **store profiles for up to 1000 users**.

24/7 Online Training with My Sharp™

Managing all of the advanced features of your Sharp product is simple and easy. Ask your Authorized Sharp Dealer about the **My Sharp website**. This dedicated customer training website is customized to your MX-2615N/3115N and allows you to locate resources and find information specific to your configuration, truly helping you maximize your investment.



HEIGHTENED SECURITY HELPS PROTECT YOUR BUSINESS

To help protect your data, the MX-2615N/3115N offers several layers of security, making Sharp the optimum choice to help protect employees privacy and intellectual property.* As a leader in office equipment security, Sharp makes it easy for virtually any business or government entity to safely deploy digital copying, printing, scanning and faxing.

Authority Groups

Advanced account management enables administrators to set authority groups for access to features of the MX-2615N/3115N. Administrators can control which department, for instance, has full access to copying, printing, scanning and/or fax. Walk-up users enter a Code, Local Name and Password, or LDAP User Authentication to access the features assigned to their group.

Data Overwrite and Encryption

To help protect your data, the MX-2615N/3115N can encrypt document data using **AES** (Advanced Encryption Standard) **256-bit encryption**. The MX-2615N/3115N can also erase the temporary memory on the hard drive by overwriting the encrypted data up to seven times, offering an unprecedented level of assurance. A convenient **End-of-Lease feature** overwrites all data, including document filing, user data, job status, date and address book.

Network Scanning Access Control

To help protect your network from unauthorized e-mail communications, the MX-2615N/3115N supports **User Authentication**, requiring users to login before performing any network scanning operations.

Control Device Access Over the Network

To help restrict access to the device over the network, the MX-2615N/3115N offers IPsec, SMB and extended support for **SSL Encryption** (Secure Sockets Layer), **IP/MAC address** filtering, IEEE 802.1x authentication, protocol enable/disable and port management for maximum security.

**Some features require optional equipment and/or software.*

Documents Remain Confidential

The MX-2615N/3115N offers **Confidential Printing**, which when used, requires users to enter a PIN code in order to print a queued document. To help protect your direct-print documents from unauthorized viewing, the MX-2615N/3115N offers encrypted PDF printing and scanning. Additionally, **Secure Fax Release** ensures received fax documents are held in memory until an authorized user enters a PIN code, so that compliance with healthcare regulations such as HIPAA is easier.

Tracking and Auditing Information

Legislation and industry policies require companies to be more aware of information flow from their offices. Sharp offers both built-in and additional hardware/software which allows users to control, access and track usage of each device on the network.

Data Security Kit (Optional)

For maximum protection, the optional data security kit offers additional features, such as Data Overwrite at Power Up, Document Filing access control and Restricted Status Display.

These scalable security offerings aim to protect your intellectual property, preserve confidential information and help your business to meet regulatory requirements, such as the Health Insurance Portability and Accountability Act (HIPAA), and the Gramm-Leach-Bliley Act (GLB). For additional information visit: www.sharpusa.com/security.

ENVIRONMENTAL COMMITMENT



An Environmentally Responsible Approach to Product Design

The MX-2615N/3115N utilizes Sharp's advanced micro-fine toner technology, which offers a lower consumption rate and produces less waste than conventional toners, resulting in longer replacement intervals. Sharp supplies are packaged using fully recyclable materials. Long-life consumable parts help minimize service intervals and downtime, resulting in lower operating costs. With two different energy saving modes, power can be reduced or shut off at set intervals. The MX-2615N/3115N document systems are ENERGY STAR® certified and RoHS compliant to restrict the use of hazardous substances.



Toner Recycling Program

As part of our commitment to helping preserve the environment, Sharp offers our customers zero waste land fill recycling for all Sharp consumables, including cartridges, bottles, toner collection containers and drum units. Sharp encourages customers to recycle their used Sharp toner cartridges in bulk by providing a pre-paid Recycling Kit for their return to our facility.

Environmental Leadership

As a testament to our commitment to the environment, Sharp is a three-time winner of the ENERGY STAR annual Excellence in Energy Proficiency Product Design. Sharp is also a four-time winner of the SmartWay® Excellence Award, which recognizes companies for conserving energy and lowering greenhouse gas emissions in logistics and transportation. Sharp was also a previous recipient of the Excellence in Partnership Green Contractor Award and the Evergreen Award from the General Services Administration (GSA) and the Coalition for Government Procurement. These awards recognize environmentally responsible businesses and their efforts on recycling, waste reduction and affirmative procurement practices.

Global Initiatives

Sharp is committed to environmental sustainability and corporate responsibility including planning, design, manufacturing, distribution and product end-of-life management. For more information about Sharp's environmental leadership including information about energy efficient products, electronics or toner cartridge recycling, please visit www.sharpusa.com/environment.

MX-2615N/3115N SPECIFICATIONS

Main Specifications

MX-2615N MX-3115N	Includes multi-tasking controller, 320 GB HDD with document filing system, PCL6 network printing, network scanning, 100 sheet RSPF, auto-duplex, one 500-sheet paper drawers and 100-sheet bypass. Black and color developer is included in the box.				
Type	Desktop, color multi-function digital document system				
Display	7" (diagonally measured) color dot matrix touch panel. 800 x 480 dots (W-VGA)				
Functions	Copy, print, network print, network scan, document filing and fax ¹				
Copy System	Dry electrostatic transfer/Dual component developer/Magnetic brush development/OPC drums/Belt type fusing/white LED exposure				
Originals	Sheets and bound documents				
Max Original Size	11" x 17"				
Copy Size	Min. 5½" x 8½", Max. 11" x 17" + 12" x 18"				
Copy Speed	26/31 ppm B&W/Color (8½" x 11")				
Multiple Copy	Max. 999 copies				
First Copy Time (Seconds) ²		MX-2615N		MX-3115N	
		Black	Color	Black	Color
	Platen Glass	5.9	8.1	5.8	7.9
	Doc. Feeder	9.1	11.6	9.1	11.6
Warm Up Time	18 seconds or less ²				
Magnification	25% to 400% in 1% increments (with document feeder 25%-200%)				
Original Feed	100-sheet RSPF with original size detection				
Scan Speed	Copy mode: Up to 50 opm (B&W) @ 600 x 400 dpi; Up to 36 opm (Color) @ 600 x 600 dpi. Network Scan: Up to 50 opm (B&W or Color) 200 x 200 dpi. All times based on single-side letter originals.				
Original Sizes	5½" x 8½", 8½" x 11", 8½" x 11" R, 8½" x 14", 11" x 17" (13-32 lb. bond)				
Paper Capacity	Std. 600 sheets / Max. 3,100 sheets				
Paper Feed System	Standard: (1) 500-sheet paper drawer (letter/legal/ledger/statement size) and 100-sheet bypass tray (letter/legal/ledger/statement/envelope size). Optional: Single, double or triple drawer paper deck (500-sheets each drawer), tandem paper deck (2,500-sheets), letter/legal/ledger/statement size. See your local dealer for configurations.				
Paper Types	Paper drawers: 16 lb. bond -110 lb. index. Other paper types include plain, pre-printed, recycled, pre-punched, letterhead and color paper. Bypass Tray: 16-28 lb. bond (plain paper), 13-16 lb. bond (thin paper), 28 lb. bond-140 lb. index (heavy paper), 20-24 lb. bond (Monarch/Com-10 envelope), tab paper (letter size only). Also label paper, gloss paper, pre-printed, recycled, pre-punched, letterhead, color paper and OHP film.				
Duplexing	Standard automatic duplex copying and printing				
CPU	Mmulti-processor controller				
Interface	RJ-45 Ethernet (10/100/1000Base-T), USB 2.0 (2 host ports, front and rear), USB 2.0 (1 device ports)				
Memory	Standard 1 GB + 2 GB option				
Hard Disk Drive	320 GB				
Copy Resolution	Scan: B&W/color: 600 dpi; Copy Output: B&W/color: 600 dpi				
Color Modes	Auto Color Control (ACS), Full Color Mode, Monochrome (B/W)				
Exposure Control	Modes: Automatic Text, Text/Photo, Text/Printed-Photo, Printed-Photo, Photo, Map, Pale-Color Document. Settings: Auto exposure control or 9 step manual exposure.				
Halftone	256 gradations/2 levels (monochrome)				
Copy Features	Scan-Once Print-Many, electronic sorting, offset-stacking, Auto Color Sensing (ACS), Auto Paper Sensing (APS), Auto Magnification Sensing (AMS), auto tray switching, rotation copy, reserve copy, tandem copy, book copy, margin shift, tab-paper insertion, edge erase, center erase, dual page copy, cover pages, insert pages, OHP insertion, job build, card shot, multi-page enlargement, mirror image, black-white reversal, centering, proof copy, 2-in-1/4-in 1, pamphlet, photo repeat, document filing, account management, job programs, date/character/page stamp.				
Account Control	Up to 1000 users. Supports user-number authentication (on device), login name/password (on device) or login name/password (on device via LDAP server) for Copy, Print, Scan, Fax and document management.				
Output Tray	Main output tray (top) 400 sheets (face down); optional eject tray (right 1 side) 100 sheets (face down)				
Capacity					
Firmware	Flash ROM with local (USB), network update capability				
Management	and firmware update 1 to N with SRDM (Sharp Remote Device Management)				
Configuration Method	Web-based management with user/administrator level login, cloning (1 to N) with SRDM and remote front panel access				

Main Specifications (continued)

Service/Maintenance	Remote front panel access, remote access to service logs and click counts
Accessibility Features	Adjustment of Key Touch-Send and Speed, Concave Key, Document Feeder Free Stop, Job Programs, Remote Front Panel, Universal Grip for Paper Trays and Disable Screen Timeout
Environmental Standards	The International Energy Star Program (EPA) Ver. 1.2, Law on Promoting Green Purchasing*. European RoHS (Restriction of Hazardous Substances)
Power	AC 100-127 VAC, 60 Hz, 12 Amps
Power Cons.	Maximum: 1440 W
Weight	Approx. 166.7 lbs. (base model)
Dimensions	24" (w) x 25½" (d), x 33" (h)
Network Printing System	
PDL	Standard PCL6 compatible, optional PostScript*3™ compatible, optional XPS
Resolution	600 x 600 dpi
Print Speed	26/31 pages per minute (8½" x 11")
Print Drivers	Windows Server® 2003-2008, Windows® XP, Windows XP x64, Windows Server x64, Windows Vista®, Windows Vista® x64, Windows® 7, MAC OS®, OSX (including 10.4.11, 10.5-10.5.8, 10.6-10.6.8, 10.7-10.7.4), all MAC PPD
Features	Auto configuration, continuous printing, electronic sorting, offset stacking, N-up printing, duplex printing, transparency inserts, margin shift, image rotation, different cover page, poster print, job bypass print, job retention, confidential print, proof print, user authentication, image stamp and watermarks, multiple pamphlet, network tandem print, carbon copy print mode, different cover page/last page/other page, form overlay, tab paper settings, tab printing, chapter inserts, page Interleave and bar code font printing (requires MX-PF10 bar code font kit)
Direct Printing (optional)	File Types: TIFF, JPEG, PCL, PRN, TXT, PDF, Encrypted PDF, Postscript and XPS* Methods: FTP, Web page, E-mail and USB memory
Resident Fonts	80 outline fonts (PCL), 136 fonts (PS)
Interface	RJ-45 Ethernet 10/100/1000 Base-T, USB 2.0
Operating Systems	Windows Server 2003-2008, Windows XP, Windows Vista, Windows 7, MAC OSX 10.4.11, 10.5-10.5.8, 10.6-10.6.8, 10.7-10.7.4 Novell® Netware® 3x, 4x, 5x, Sun® OS 4.1x, Solaris® 2x, Unix®, Linux® and Ctrix® (Metaframe, Presentation Server 4, 4.5) and Windows Terminal Services. ¹
Network Protocols	TCP/IP (IPv4, IPv6, IPSEC) SSL (HTTP, IPP, FTP), SNMPv3, 802.1x for Windows and Unix. LPD and LPR for UNIX. IPX/SPX® for Novell environments. EtherTalk®, AppleTalk® for Macintosh® environments. ¹
Printing Protocols	LPR, IPP, IPPS, PAP, Raw TCP (port 9100), FTP and Novell Pserver/Rprinter
Network Security	IP/Mac address filtering, protocol filtering, port management, user authentication and document administration. ¹
Security Standards	IEEE-2600™ 2008 for MFP devices, DoD (NSTISSP) #11, DoD Directive 8500.2, DoD (DISA) ¹
Network Scanning System	
Scan Modes	Standard: Color, monochrome, grayscale
Max Original Size	11" x 17"
Optical Resolution	600 dpi
Output Modes	600 dpi, 400 dpi, 300 dpi, 200 dpi, 100 dpi
Image Formats	Monochrome: TIFF, PDF, Encrypted PDF, XPS Color: Grayscale, Color TIFF, JPEG, PDF, Encrypted PDF, XPS Internet Fax: TIFF-FX, FIFF-F, TIFF-S ¹
Image Compression	Monochrome Scanning: Uncompressed, G3 (MH), G4 (MR/MMR) Color/Grayscale: JPEG (high, middle, low) Internet Fax mode: MH/MMR (option)
Scan Destinations	E-mail, Desktop, FTP, Folder (SMB), USB, Internet fax (option), Super G3 fax (option)
One-touch Destinations	Up to 1000 (combined scan destinations)
Group Dest.	Up to 500
Programs	48 (combined)
Max. Jobs	Up to 94
Network Protocols	TCP/IP and SSL (includes HTTP, SMTP, LDAP, FTP, POP3), SMB, ESMTP and 802.1x.
Network Security	E-mail server user authentication for LDAP and Active Directory
Software	Sharpdesk® desktop document management software (1 user license)

B&W Super G3 Fax Kit (option)

Transmission Mode	Super G3, G3
Modem Speed	33.6 KBPS ³
Compression Methods	JBIG, MMR, MR, MH
Scanning Method	Sheet fed simplex or duplex or book
Max. Transmit Resolution	400 dpi
Transmit Speed	Approx. 2 seconds with Super G3/JBIG ⁴
Auto Dialing	Up to 1000 (combined scan destinations)
Group Dial /Destinations	Up to 500
Inbound Fax Routing:	Forwards received fax data to E-mail
Long Length Originals	Up to 31½" (for transmission)
Programs	48 (combined)
Memory	1 GB (shared)
Halftone	256 levels
Features	Quick on-line transmission, direct transmission, F-Code transmission/reception, rotate transmission, in-bound fax routing, anti-junk fax reception, automatically staple received faxes, secure fax release, out of paper memory reception, auto redial, 2-in-1 reception, duplex reception transaction reports, activity reports and PC fax.

Inner Finisher (option)

Type	Built-in finisher (hole-punch unit option)
Output Capacity	500 sheets (letter/statement) or 250 sheets (ledger/legal size)
Output Delivery	Face down
Stapling Media	Plain paper, (letter, legal, or ledger size)
Stapling Positions	1 front, 1 rear, or both
Power Source	Supplied from main unit
Stapling	Up to 50 sheets (letter size) or 30 sheets (legal, ledger or mixed)
Stapled Sets	30 bundles or 500 sheets (letter or statement size) or 30 bundles or 250 sheets (legal or ledger size)
Hole Punching	Optional hole punch unit MX-PN11B (2 holes/3 holes)
Weight	Approx. 26.5 lbs.
Dimensions	24¾" (w) x 23½" (d) x 8" (h) (includes extended tray)

Optional Equipment

MX-DE12	Stand/1 x 500 Sheet Paper Drawer
MX-DE13	Stand/2 x 500 Sheet Paper Drawer
MX-DE14	Stand/3 x 500 Sheet Paper Drawer
MX-DE20	Stand/500 + 2,000 Sheet Tandem Paper Drawer
MX-36ABD	Rolling Cabinet Base
MX-FN17	Finisher
MX-PN11B	3 Hole Punch Unit (Requires MX-FN17)
MX-TR13N	Exit Tray Unit
MX-PK11	PostScript 3 Kit
MX-PUX1	XPS Expansion Kit
MX-FX11	Fax Expansion Kit
MX-FWX1	Internet Fax Kit
MX-PF10	Bar Code Font Kit
MX-AMX1	Application Integration Module
MX-AMX2	Application Communication Module
MX-AMX3	External Accounting Module
MX-FR40U	Commercial Data Security Kit
MX-KB14N	Keyboard
MX-LT10	Long Paper Feeding Tray

Supplies

MX-36NTBA	Black Toner Cartridge
MX-36NTCA	Cyan Toner Cartridge
MX-36NTMA	Magenta Toner Cartridge
MX-36NTYA	Yellow Toner Cartridge
MX-36NVBA	Black Developer
MX-36NVSA	Cyan/Magenta/Yellow Developer
MX-36NRSA	Drum
MX-230HB	Toner Collection Container

¹ Some features may require optional equipment and/or software.

² May vary depending on product configuration, machine settings and operating and/or environmental conditions.

³ Actual transmission time will vary based on line conditions.

⁴ Based on Sharp Standard Test Chart with approximately 700 characters, letter size in standard resolution.

SHARP®



SHARP ELECTRONICS CORPORATION
1 Sharp Plaza, Suite 1
Mahwah, NJ 07495-1123
1-800-BE-SHARP • www.sharpsusa.com

Design and specifications subject to change without notice. Sharp, Sharp OSA, Sharpdesk, My Sharp, and all related trademarks are trademarks or registered trademarks of Sharp Corporation and/or its affiliated companies. Windows, Windows Server and Windows Vista are trademarks or registered trademarks of Microsoft Corporation. All other trademarks are the property of their respective owners.

